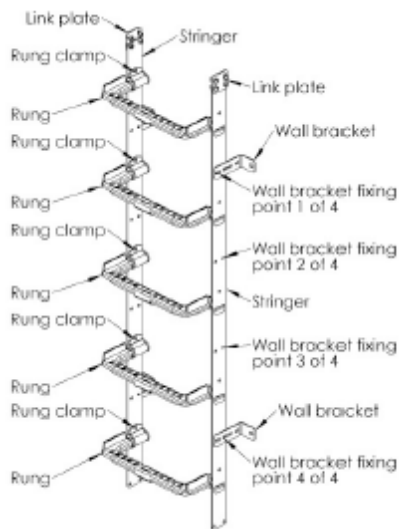
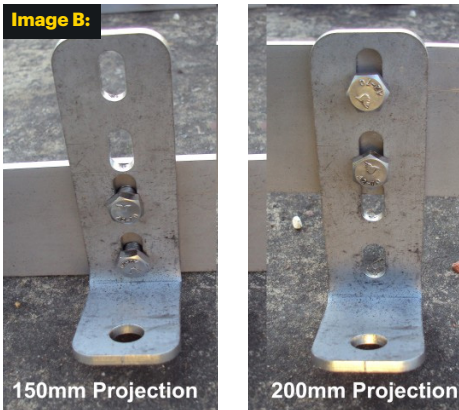


**Image A:**



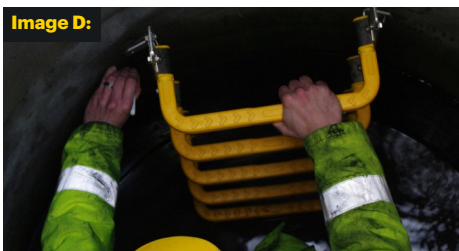
**Image B:**



**Image C:**



**Image D:**



### Required Equipment:

1. M10 Anchor fixings to suit material that ladder is to be fixed to.
2. Drill, spanner & preparation equipment to suit chosen fixing.
3. 2off 13mm spanners.

### To Install Caswick Modular Ladder:

1. Identify components as shown in image A. Overall length of supplied section may vary.
2. Decide on required projection of ladder rung from wall (as shown on Image B) and loosely fix the wall brackets to stringers. Fit 4 wall brackets onto first section (shown left on image C) to uppermost and lowermost positions. Fit 2 wall brackets to the uppermost position of subsequent sections (shown right on image C). Fit link plates to the top of all but the final section of ladder. Do not tighten the nuts at this stage as there is some movement in the brackets to allow for an uneven surface, but ensure the nuts are tight enough such that they will not fall off. The ladders may be supplied with brackets ready fitted from the factory. If this is the case refer to the label on each section. The ladders will be numbered in sets and the sections of each ladder will also be numbered, section 1 is the lowermost section and the sections are assembled in order.
3. Support the first section so that the lowest rung is within desired distance from benching. Ensure that the section is aligned with the access and vertical. Mark the position of the 4 off mount points (Image D) and fix chosen anchors in accordance with the manufacturers instructions.
4. Secure the first section of ladder and tighten the brackets to the stringer with 2off 13mm spanners (Image E).
5. Loosely fit the next section of ladder to the link plates, ensure the section is vertical and fix the next wall brackets. Tighten the wall brackets and link plate nuts and bolts with 2off 13mm spanners.
6. Repeat step 5 until all sections are installed.
7. If the final section is too long cut and deburr the stringer approximately 60mm above uppermost required rung (Image F).
8. Installation can be completed bottom up as described here or top down if this permits easier access.

